



ARTICLE 33

CONTACT: GENERAL PRINCIPLES CHARGE & BLOCK

Also available on www.refereevision.com

VIDEOS → CHARGE & BLOCK &

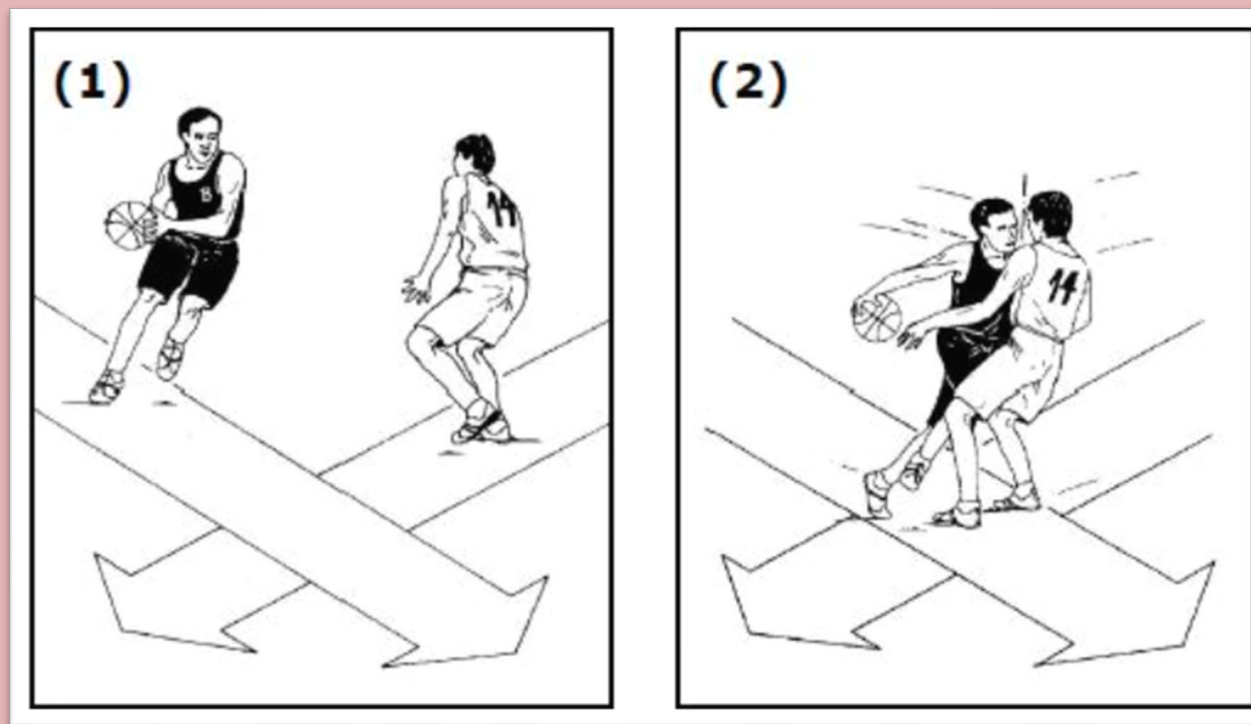
BOOKS → PRESENTATIONS

by

K. AJOY LAWRENCE

CHARGING

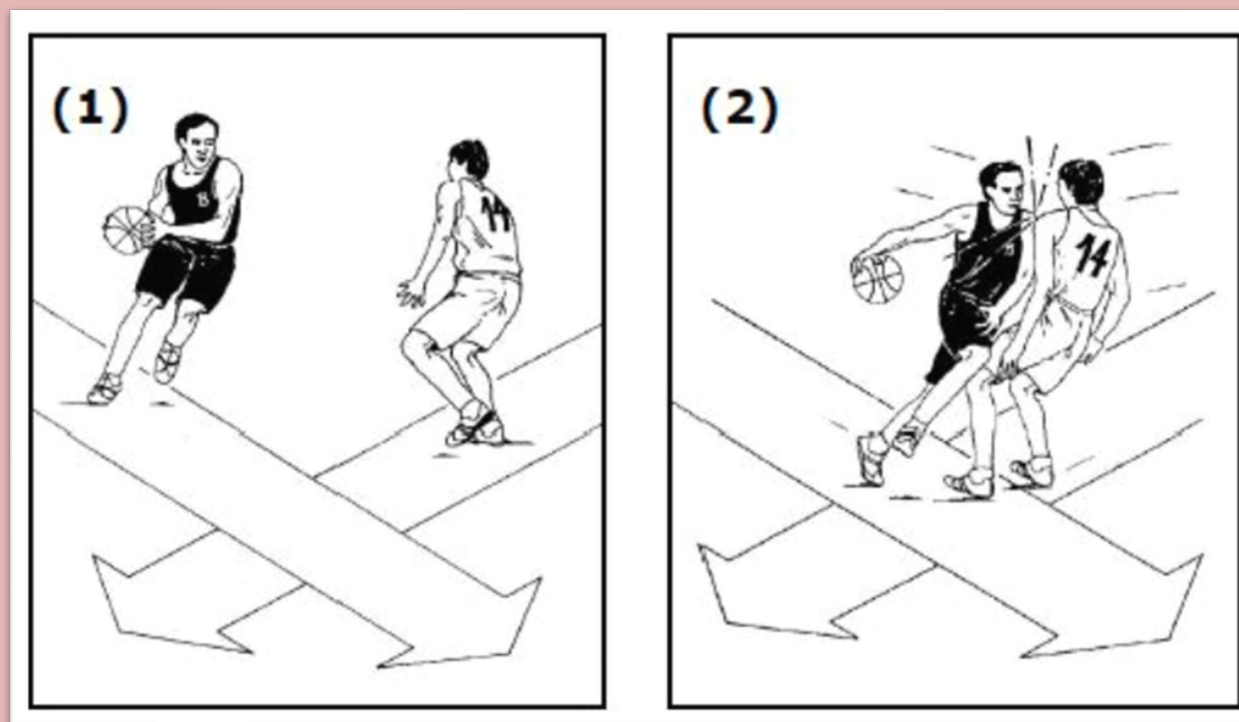
Illegal personal contact with or without the ball by pushing and moving into an **opponent's torso**





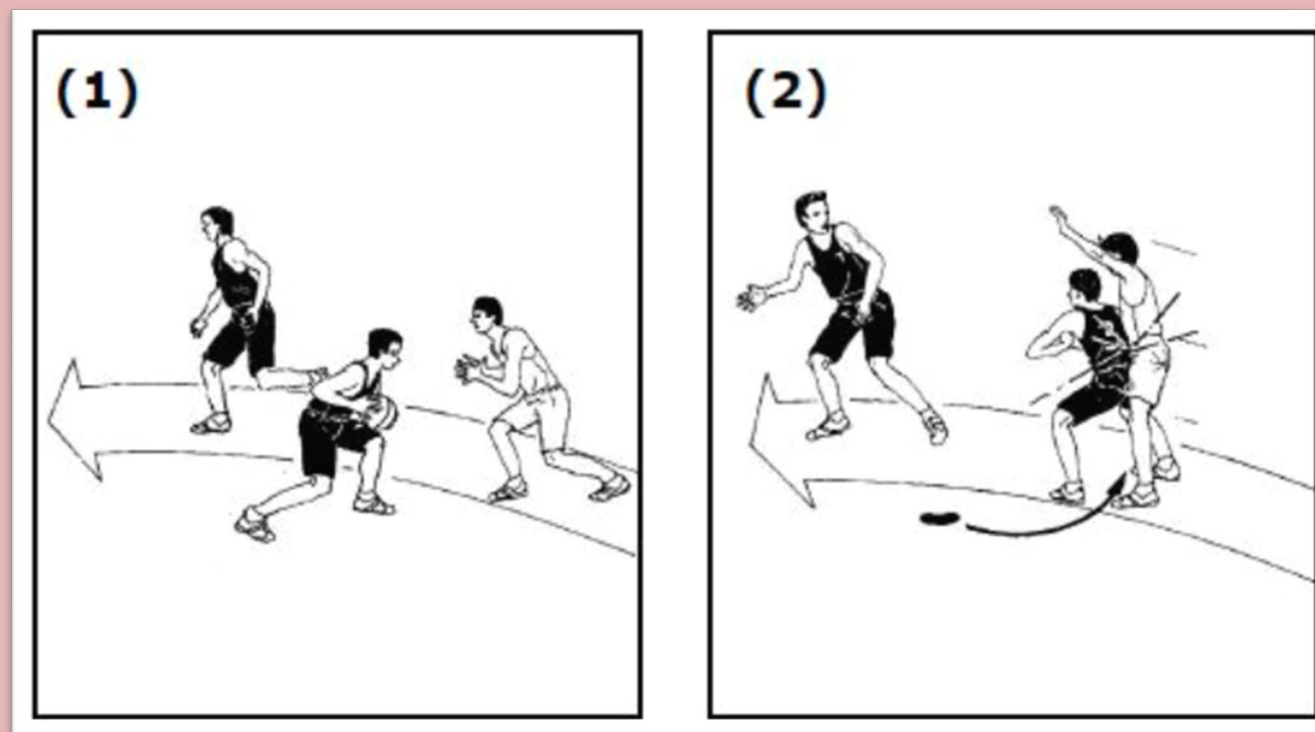
BLOCKING

Illegal personal contact which impedes the progress of an opponent with or without the ball



BLOCKING

A player who is attempting to screen is committing a blocking foul if contact occurs when moving, and the opponent is stationary or retreating.

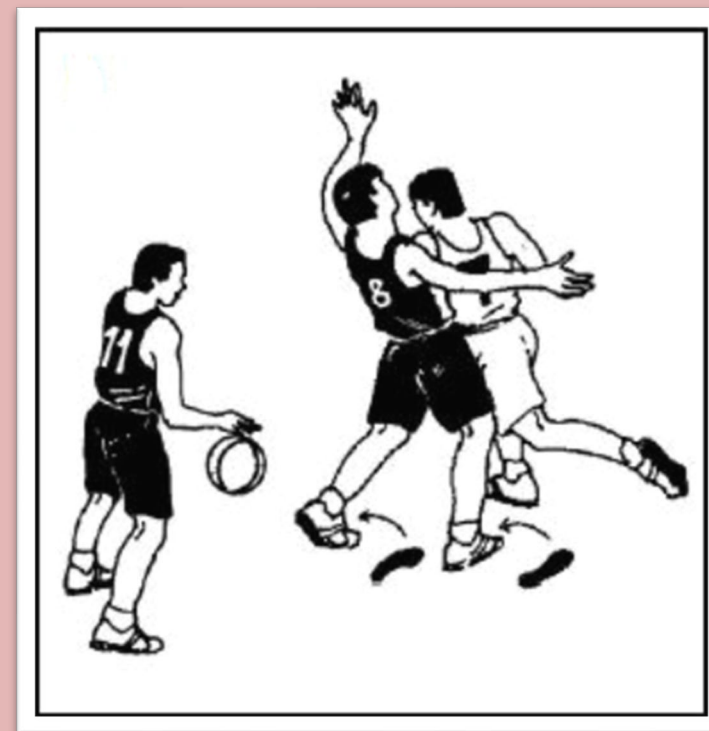




BLOCKING

If a player disregards the ball, faces an opponent and shifts position as the opponent shifts, that player is primarily responsible for any contact that occurs, *unless other factors are involved*.

The expression '**unless other factors are involved**' refers to deliberate pushing, charging or holding of the player who is being screened.

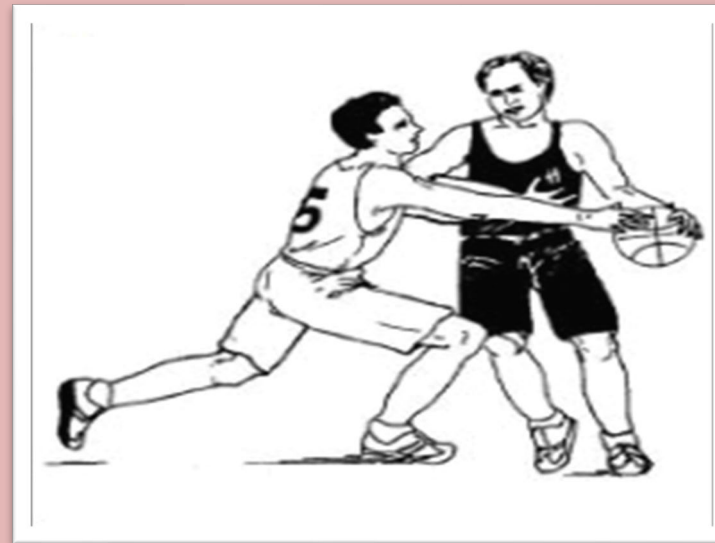




BLOCKING

It is legal for a player to extend the arm(s) or elbow(s) outside the cylinder in taking position on the court but they must be moved inside the cylinder when an opponent attempts to pass by.

If the arm(s) or elbow(s) are outside the cylinder and contact occurs, it is blocking or holding.





NO-CHARGE SEMI-CIRCLE AREAS

The no-charge semicircle areas are marked on the court for the purpose of designating a specific area for the *interpretation of charge/block situations* under the basket.

CRITERIA FOR NO CALL:

- Offensive player is in control of the ball whilst airborne, **and**
- Offensive player attempts a shot for a goal or passes the ball, **and**
- The defensive player has one foot or both feet in contact with the no-charge semicircle area.

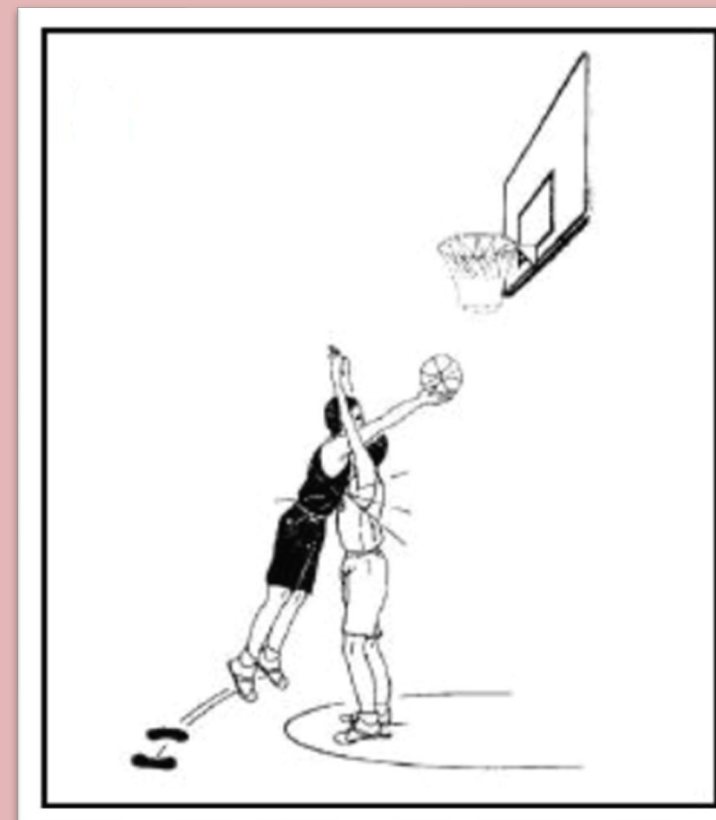


NO-CHARGE SEMI-CIRCLE AREAS

CHARGING FOUL



NO CALL





NO-CHARGE SEMI-CIRCLE AREAS

The no-charge semicircle rules applies only to **an airborne offensive player** and not for a dribbler.

CHARGING FOUL

